

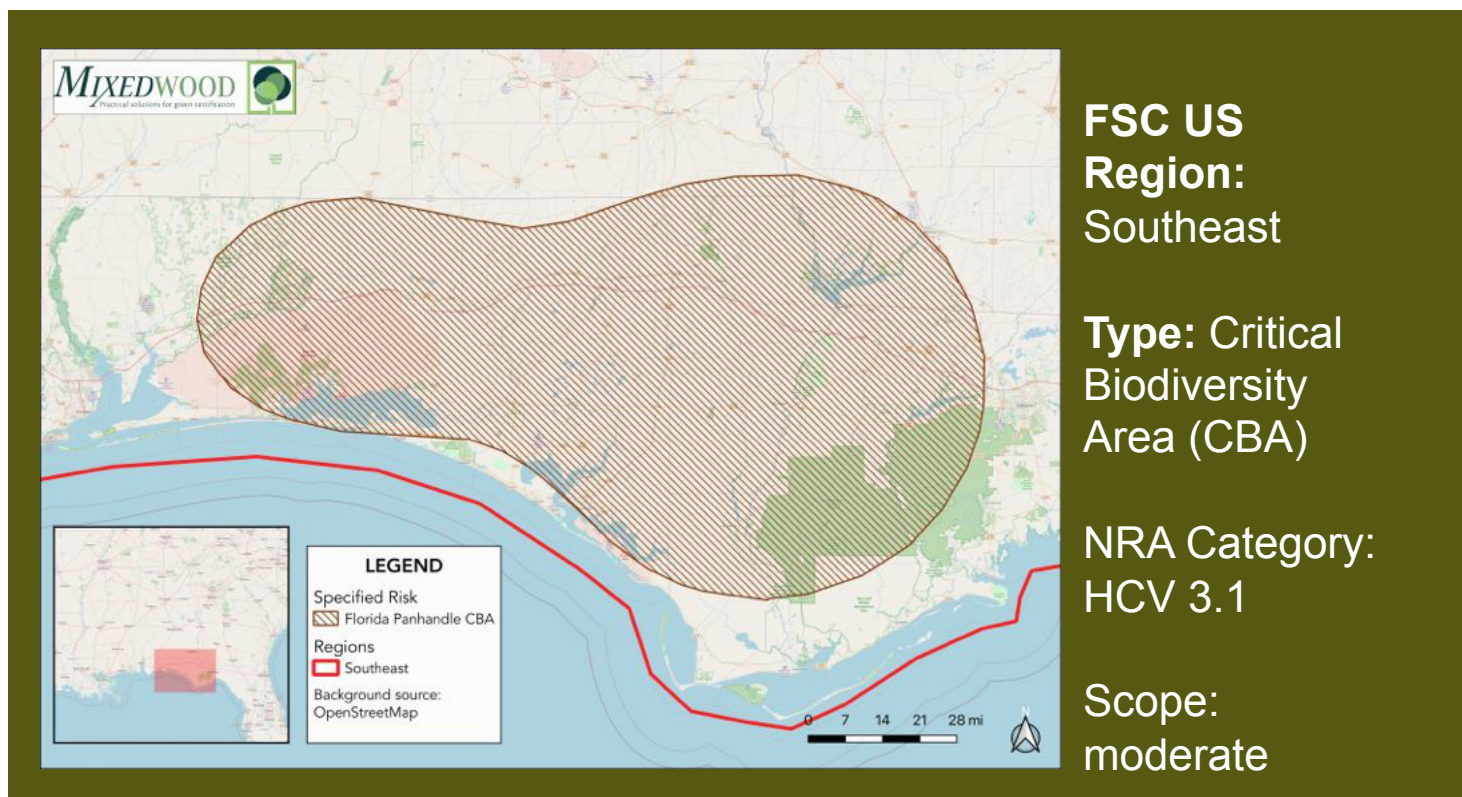
Description

The Florida Panhandle is reported to be one of the 5 richest biodiversity hotspots in North America. Of particular importance are frogs, snakes, turtles, and mussels. This concentration of biodiversity is driven by river systems (particularly the Apalachicola River), longleaf pine savanna habitat and unique steephead ravines. Biodiversity richness is centered on the area where the Chattahoochee River meets the Flint River and form the Apalachicola River. Steephead Ravines along the Apalachicola River system contain a wide diversity of species including rare, threatened, and endangered species, due largely to the variety of site conditions and microclimates.

Historically, longleaf pine savanna supported incredibly high species richness and were maintained by fire. The biodiversity values are driven in part by the resulting understory plant community. Eglin Air Force Base within this CBA includes one of the largest remaining longleaf pine forests under single ownership.¹

FLORIDA PANHANDLE CBA

FSC Controlled Wood
Specified Risk Fact Sheet



¹Forest Stewardship Council. (2018). FSC US Controlled Wood Regional Meeting Report Southeast & Mississippi Alluvial Valley Regions: Atlanta, GA. Retrieved from <https://us.fsc.org/download.controlled-wood-regional-meeting-report-southeast-mississippi-alluvial-valley-regions.a-703.pdf>





High Conservation Value (HCV)

This CBA is considered an HCV because it contains a high overall species richness, diversity, or uniqueness within a defined area compared to other sites within the same biogeographic area. The CBA was identified using a species richness index originally published by NatureServe and The Nature Conservancy that identifies areas with high concentrations of rare species.¹

Recommended Mitigation

- **Education & Outreach:** information sharing with landowners, loggers, wood suppliers.

Mitigation Resources

- **Florida Department of Agriculture** – Silviculture Best Management Practices (BMPs).
- **Northwest Florida Water Management District** – Apalachicola River and Bay Overview & SWIM Plan.
- **Florida Sustainable Forestry Initiative (SFI) Implementation Committee**. Landowner resources.
- **Florida Forestry Association** - Find Your County Forester.

Information Sources

- **University of Florida** - Upland Forest Ecosystems: Description & links to resources.
- **Florida Fish & Wildlife Conservation Commission**: Florida's Cooperative Conservation Blueprint.
- **Southeastern Partnerships for Forests & Water** - Healthy Forests = Clean Water. Fact Sheet PDF.
- **NatureServe** - Longleaf Pine Sandhill: Ecological Report.
- **Eglin Air Force Base** - Giving Mother Nature a Hand. Article.

