

Description

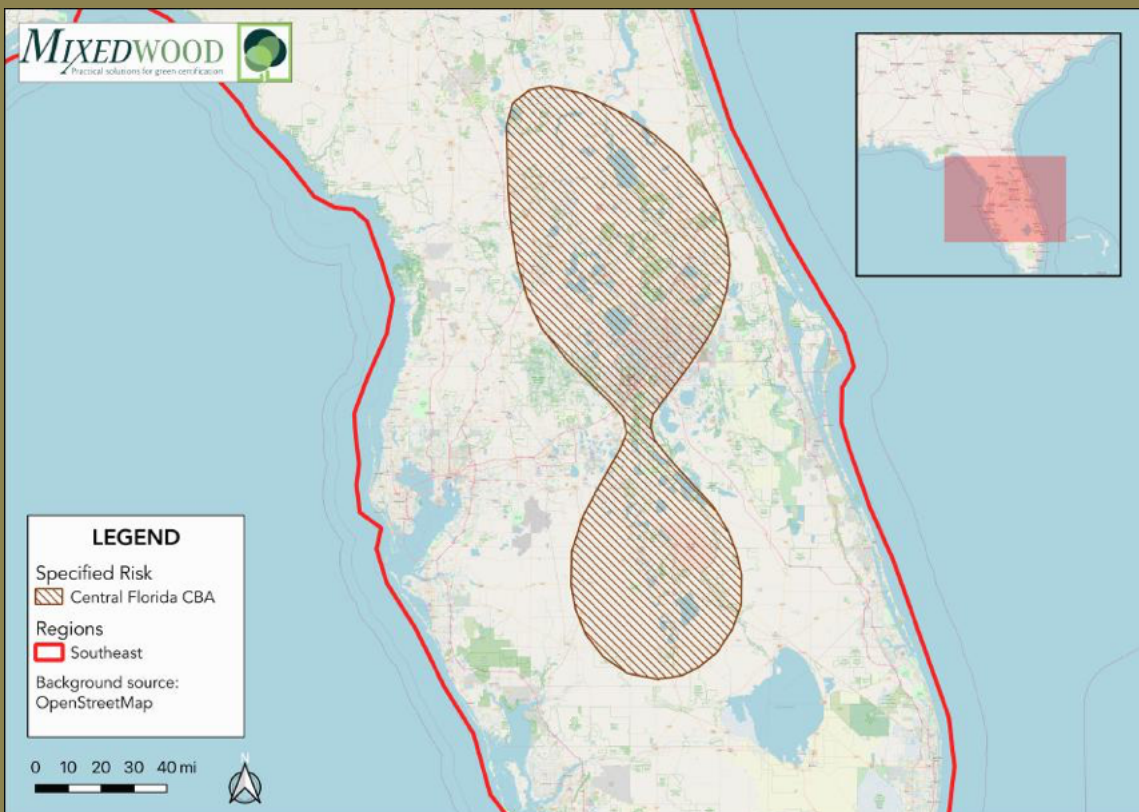
As in other areas of the southern US, native pine ecosystems are an important driver for biodiversity in this CBA. Pine flatwoods in Central Florida are associated with drier uplands/sandhills that provide a range of biodiversity values.

Longleaf pine is the dominant tree species in pine flatwoods, however as with other longleaf pine systems, the native plant diversity is one of the most significant components of the overall biodiversity.

This CBA occurs in an area that receives the highest possible scores in an assessment of Florida's biodiversity hotspots. It includes top priority areas from the Florida Critical Lands and Waters Identification Project, and also represents other spatial priorities (e.g., landscape integrity, rare species habitat conservation, strategic habitat conservation areas).¹

CENTRAL FLORIDA CBA

FSC Controlled Wood
Specified Risk Fact Sheet



**FSC US
Region:**
Southeast

Type: Critical
Biodiversity
Area (CBA)

NRA Category:
HCV 3.1

Scope:
moderate

¹Forest Stewardship Council. (2018). FSC US Controlled Wood Regional Meeting Report Southeast & Mississippi Alluvial Valley Regions: Atlanta, GA. Retrieved from <https://us.fsc.org/download.controlled-wood-regional-meeting-report-southeast-mississippi-alluvial-valley-regions.a-703.pdf>





High Conservation Value (HCV)

This CBA is considered an HCV because it contains a high overall species richness, diversity, or uniqueness within a defined area compared to other sites within the same biogeographic area. The CBA was identified using a species richness index originally published by NatureServe and The Nature Conservancy that identifies areas with high concentrations of rare species.¹

Recommended Mitigation

- **Education & Outreach:** information sharing with landowners, loggers, wood suppliers.
- **Procurement Policy:** supporting and promoting conservation.

Mitigation Resources

- **Florida Department of Agriculture** – Silviculture Best Management Practices (BMPs).
- **SFI Florida State Implementation Committee** – Sustainable Forestry Initiative (SFI) Implementation Committee. Landowner resources.
- **Florida Forestry Association**: Find Your County Forester.

Information Sources

- **University of Florida - Upland Forest Ecosystems**. Links to resources and Florida forest ecosystems descriptions.
- **Florida Fish & Wildlife Conservation Commission**: Florida's Wildlife Action Plan.
- **Florida Fish & Wildlife Conservation Commission**: Florida's Cooperative Conservation Blueprint.

Social Value

- **Florida State Parks - The Pine Flatwoods Trail**: Trail description within Dade Battlefield Historic State Park
- **USDA & US Forest Service - Southern Region Viewing Area for Pine Flatwoods & Celebrating Wildflowers**: Description and directions

