

## Description

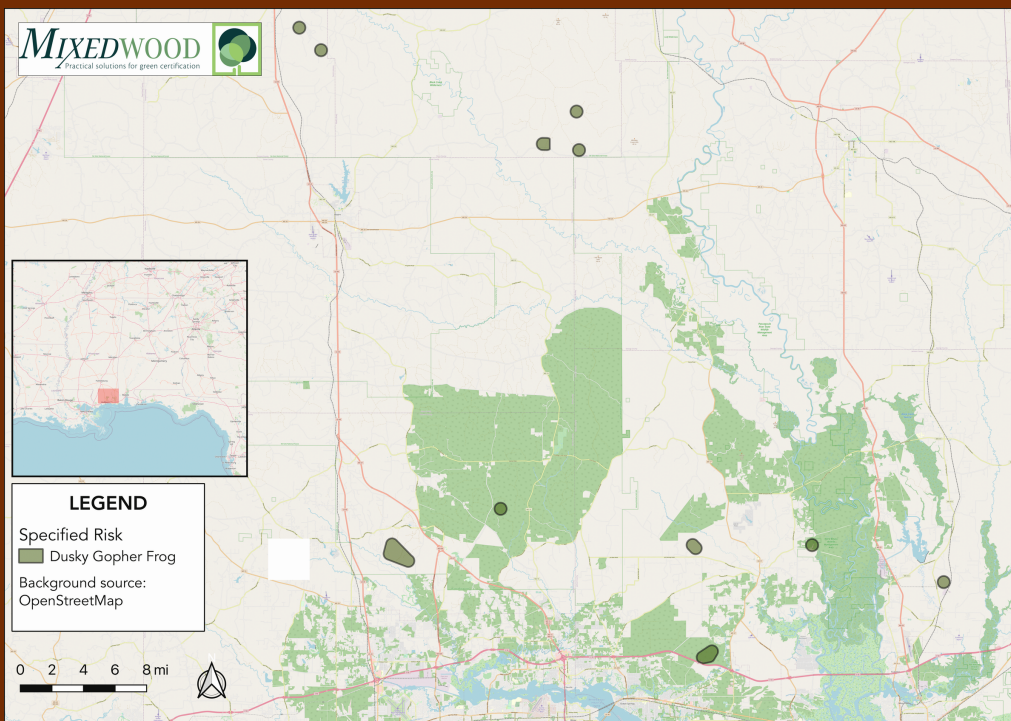
The Dusky Gopher Frog historically occurred on the Coastal Plain from eastern Louisiana to the Mobile River delta in Alabama. Now, it is only known from one site in Harrison County and a couple of sites in Jackson County, MS, although there are also active efforts to reintroduce into wetlands in Perry County, MS. It is federally endangered wherever found and is also listed as endangered by the State of Mississippi.

The species occurs in upland areas of sandy soils that were historically forested with longleaf pine and in temporary wetland breeding sites within the forested landscape. Most of its life cycle is spent in or near underground areas of refuge that historically were gopher tortoise burrows. Critical habitat was designated in 2012 within four counties in Mississippi and one in Louisiana. Current populations are documented in two of the Mississippi Counties (Harrison and Jackson) and active efforts toward reintroduction are occurring in the third (Perry). The species has not been documented in Louisiana since 1967 and there is no evidence of active reintroduction efforts.<sup>1</sup>

# DUSKY GOPHER FROG

*Rana sevosa*

FSC Controlled Wood  
Specified Risk Fact Sheet



FSC US Region:  
Southeast

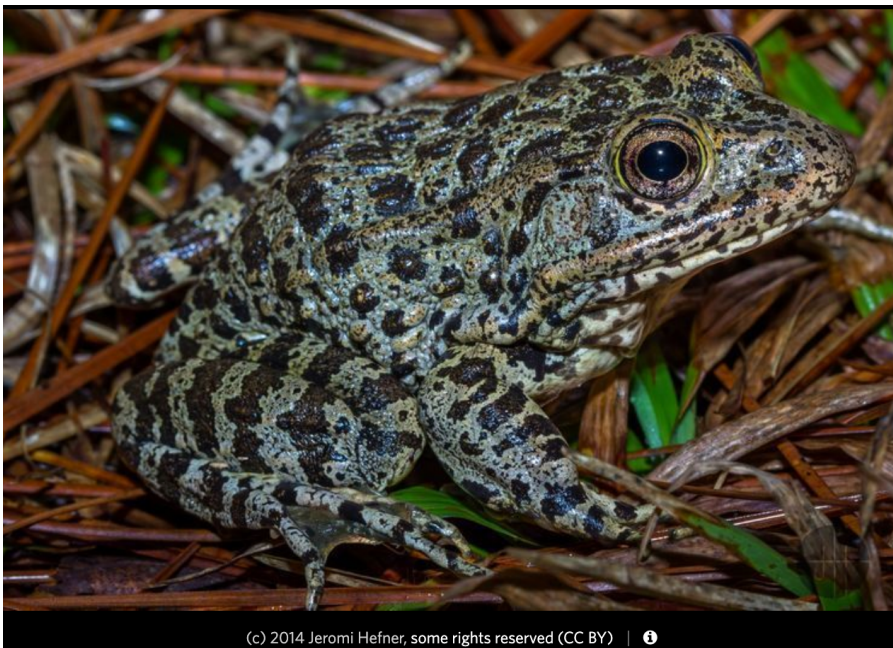
Type: species  
range

NRA Category:  
HCV 3.1

Scope: narrow

<sup>1</sup>Forest Stewardship Council. (2018). FSC US Controlled Wood Regional Meeting Report Southeast & Mississippi Alluvial Valley Regions: Atlanta, GA. Retrieved from <https://us.fsc.org/download.controlled-wood-regional-meeting-report-southeast-mississippi-alluvial-valley-regions.a-703.pdf>





(c) 2014 Jeromi Hefner, some rights reserved (CC BY) | 1

## High Conservation Value (HCV)

The Dusky Gopher Frog is considered an HCV because it is a rare species population with very limited distribution. The species was identified through an analysis of the NatureServe dataset, considering criteria including level of imperilment (both global and state scales), taxa (e.g., vertebrate species), forest habitat dependency, and recency of confirmed occurrences.<sup>1</sup>

## Recommended Mitigation

- **Avoidance:** verified evidence that wood procurement is not active in the identified area.
- **Education & Outreach:** information sharing with landowners, loggers, wood suppliers.
- **Procurement Policy:** supporting and promoting conservation.

## Information Sources

- **US Fish & Wildlife Service News:** Recovery Plan for Endangered Frog Available.
- **The Wildlife Society website:** Dusky Gopher Frog. Status updates & information.
- **Amphibian Survival Alliance:** Amphibiaweb website. Includes links to references.
- **NatureServe Explorer website:** Dusky Gopher Frog. Status updates & information.
- **International Union for Conservation of Nature (IUCN) “Red List”:** Includes references & status.
- **Center for Biological Diversity website:** Status updates & information.
- **Treehugger website:** Why the Little Dusky Gopher Frog Matters. Online article.

## Identification Characteristics

- Mid-sized, stocky, frog with a total body length of about 3 in (8 cm).
- The frog's back ranges in color from black to brown or gray and is covered with dark spots and warts.
- When exposed to bright light or threatened, the frog will put its hands in front of its face to shield its eyes.

